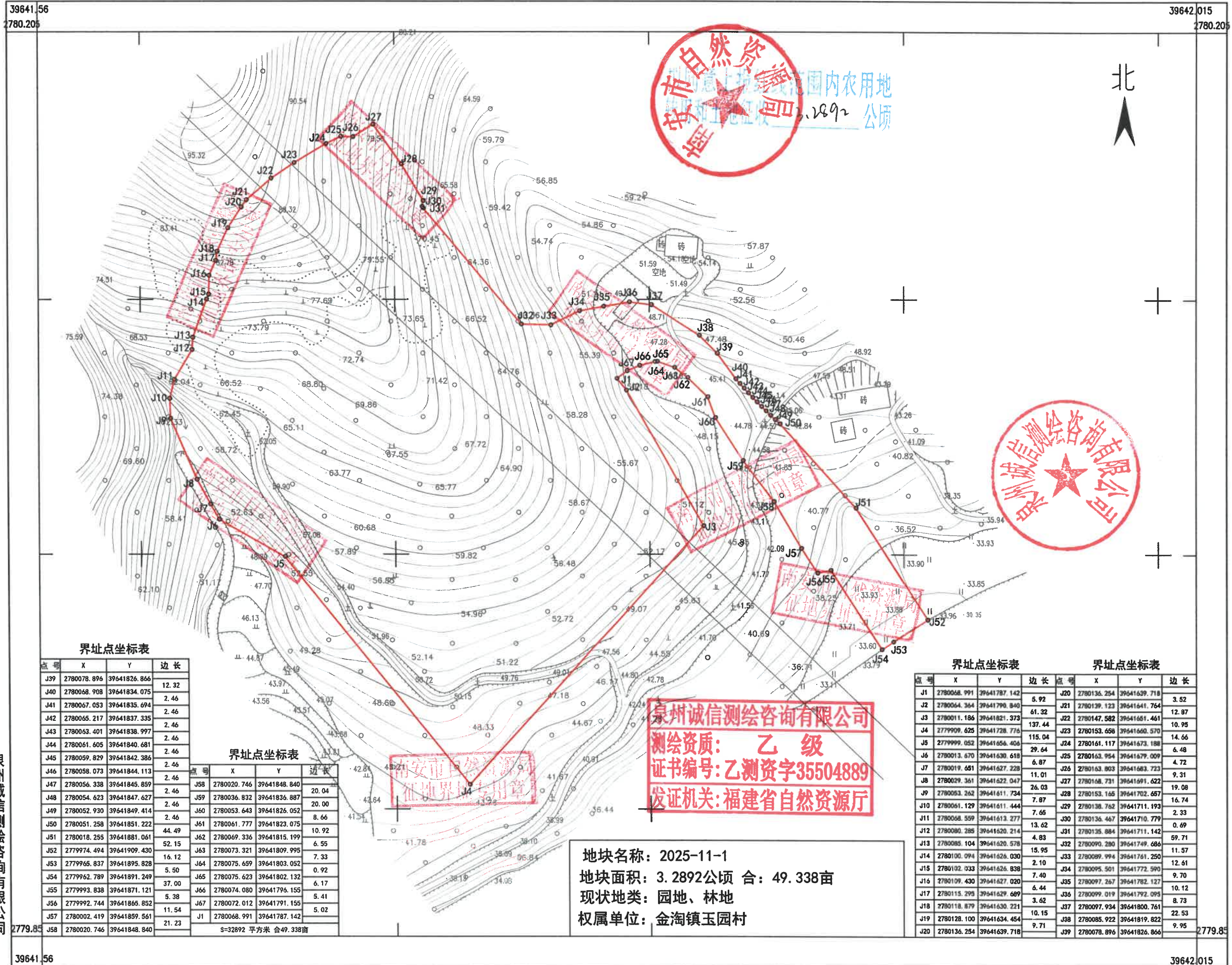


南安市2025-11-1地块征地勘测界定图



泉州诚信测绘咨询有限公司

界址点坐标表

点号	X	Y	边长
J39	2780078.896	39641826.866	12.32
J40	2780068.908	39641834.075	2.46
J41	2780067.053	39641835.694	2.46
J42	2780065.217	39641837.335	2.46
J43	2780063.401	39641838.997	2.46
J44	2780061.605	39641840.681	2.46
J45	2780059.829	39641842.386	2.46
J46	2780058.073	39641844.113	2.46
J47	2780056.338	39641845.859	2.46
J48	2780054.623	39641847.627	2.46
J49	2780052.930	39641849.414	2.46
J50	2780051.258	39641851.222	2.46
J51	2780018.255	39641881.061	44.49
J52	2779974.494	39641909.430	52.15
J53	2779965.837	39641895.828	16.12
J54	2779962.789	39641891.249	5.50
J55	2779993.838	39641871.121	37.00
J56	2779992.744	39641865.852	11.54
J57	2780002.419	39641859.561	21.23
J58	2780020.746	39641848.840	21.23

界址点坐标表

点号	X	Y	边长
J58	2780020.746	39641848.840	20.04
J59	2780036.832	39641836.887	20.00
J60	2780053.643	39641826.052	8.66
J61	2780061.777	39641823.075	10.92
J62	2780069.336	39641815.199	6.55
J63	2780073.321	39641809.995	7.33
J64	2780075.659	39641803.052	0.92
J65	2780075.623	39641802.132	6.17
J66	2780074.080	39641796.155	5.41
J67	2780072.012	39641791.155	5.02
J1	2780068.991	39641787.142	5.92

S=32892 平方米 合49.338亩

界址点坐标表

点号	X	Y	边长
J1	2780068.991	39641787.142	5.92
J2	2780064.364	39641790.840	61.32
J3	2780011.186	39641821.373	137.44
J4	2779909.625	39641728.776	115.04
J5	2779999.052	39641656.406	29.64
J6	2780013.670	39641630.618	6.87
J7	2780019.651	39641627.228	11.01
J8	2780029.361	39641622.047	26.03
J9	2780053.262	39641611.734	7.87
J10	2780061.129	39641611.444	7.65
J11	2780068.599	39641613.277	13.62
J12	2780080.285	39641620.214	4.83
J13	2780085.104	39641620.578	15.95
J14	2780100.094	39641626.030	2.10
J15	2780102.033	39641626.838	7.40
J16	2780109.430	39641627.020	6.44
J17	2780115.293	39641629.689	3.62
J18	2780118.879	39641630.221	10.15
J19	2780128.100	39641634.454	9.71
J20	2780136.254	39641639.718	3.52

界址点坐标表

点号	X	Y	边长
J20	2780136.254	39641639.718	3.52
J21	2780139.123	39641641.764	12.87
J22	2780147.582	39641651.461	10.95
J23	2780153.656	39641660.570	14.66
J24	2780161.117	39641673.188	6.48
J25	2780163.954	39641679.009	4.72
J26	2780163.803	39641683.723	9.31
J27	2780168.731	39641691.622	19.08
J28	2780153.165	39641702.657	16.74
J29	2780138.762	39641711.193	2.33
J30	2780136.467	39641710.779	0.69
J31	2780135.884	39641711.142	59.71
J32	2780090.280	39641749.686	11.57
J33	2780089.994	39641761.250	12.61
J34	2780095.501	39641772.590	9.70
J35	2780097.267	39641782.127	10.12
J36	2780099.019	39641792.095	8.73
J37	2780097.934	39641800.761	22.53
J38	2780085.922	39641819.822	9.95
J39	2780078.896	39641826.866	12.32

泉州诚信测绘咨询有限公司
 测绘资质：**乙级**
 证书编号：**乙测资字35504889**
 发证机关：**福建省自然资源厅**

地块名称：**2025-11-1**
 地块面积：**3.2892公顷 合：49.338亩**
 现状地类：**园地、林地**
 权属单位：**金淘镇玉园村**