

# 南安市2019-26-1地块征迁地勘测定界图

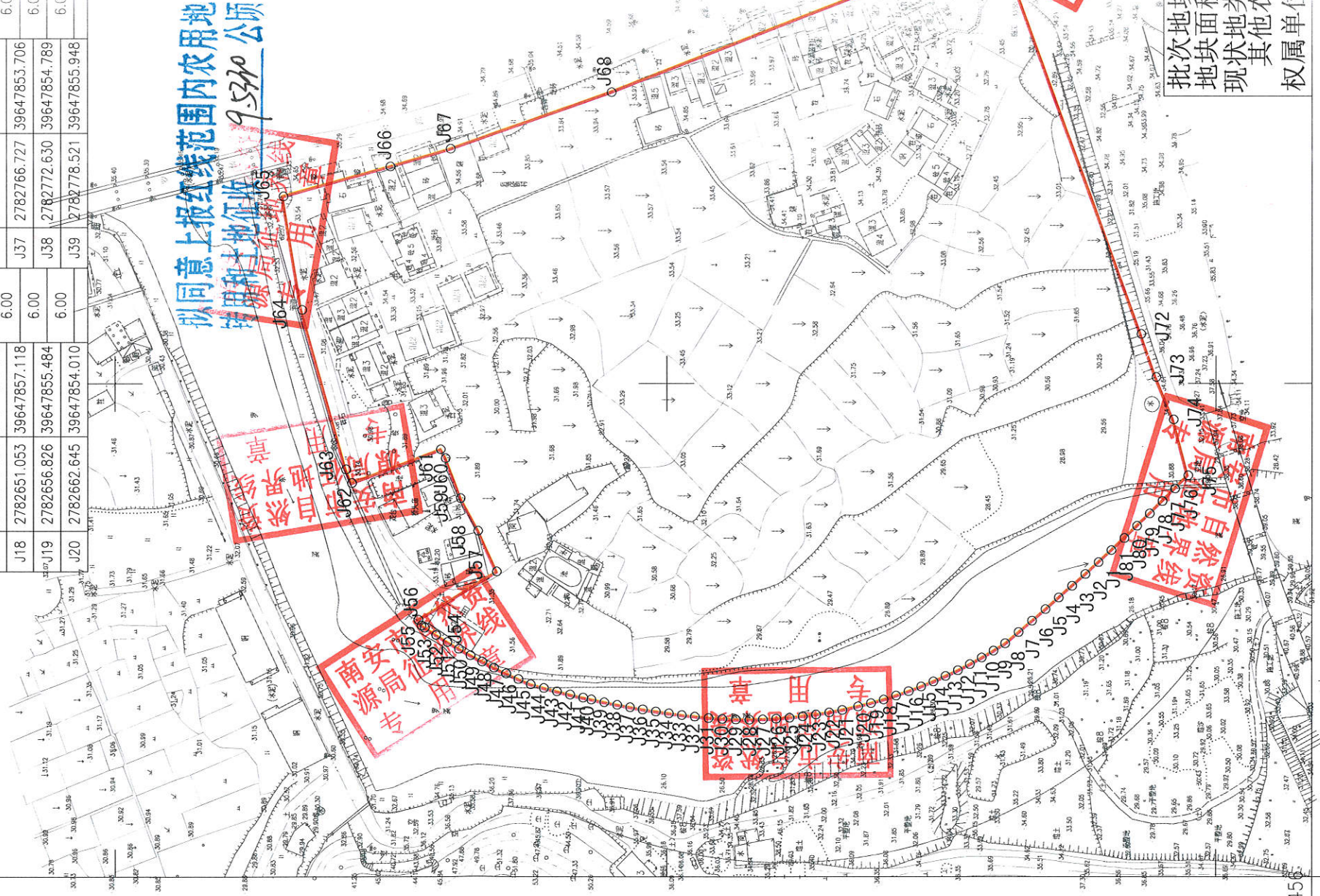
39647.777  
2783.281

39648.327  
2783.281

界址点坐标表

点号	X	Y	边长	点号	X	Y	边长	点号	X	Y	边长
J1	2782553.503	39647919.203	8.03	J20	2782662.645	39647854.010	7.44	J39	2782718.521	39647855.948	6.01
J2	2782559.457	39647913.815	8.03	J21	2782669.913	39647852.407	6.01	J40	2782784.399	39647857.185	3.77
J3	2782565.446	39647908.473	8.02	J22	2782675.816	39647851.297	6.02	J41	2782788.082	39647858.001	6.07
J4	2782571.468	39647903.176	8.02	J23	2782681.757	39647850.349	6.03	J42	2782793.996	39647859.377	6.08
J5	2782577.525	39647897.924	8.01	J24	2782687.735	39647849.564	6.05	J43	2782799.904	39647860.835	6.10
J6	2782583.616	39647892.717	8.01	J25	2782693.752	39647848.940	6.08	J44	2782815.806	39647862.374	6.12
J7	2782589.741	39647887.554	8.01	J26	2782699.812	39647848.495	6.10	J45	2782811.700	39647864.005	6.00
J8	2782595.906	39647882.444	6.24	J27	2782705.909	39647848.213	6.14	J46	2782817.212	39647866.384	6.00
J9	2782601.198	39647879.139	6.19	J28	2782712.047	39647848.102	6.18	J47	2782822.676	39647868.886	6.02
J10	2782606.543	39647876.023	6.15	J29	2782718.226	39647848.168	6.23	J48	2782828.094	39647871.503	6.03
J11	2782611.941	39647873.078	6.11	J30	2782724.448	39647848.411	6.28	J49	2782833.468	39647874.235	6.04
J12	2782617.385	39647870.305	6.08	J31	2782730.712	39647848.835	6.34	J50	2782838.796	39647877.083	6.06
J13	2782622.880	39647867.698	6.05	J32	2782737.024	39647849.464	6.01	J51	2782844.077	39647880.047	6.08
J14	2782628.420	39647865.258	6.03	J33	2782742.990	39647850.150	6.00	J52	2782849.314	39647883.131	6.10
J15	2782634.009	39647862.981	6.02	J34	2782748.943	39647850.923	6.00	J53	2782854.501	39647886.331	6.12
J16	2782639.644	39647860.866	6.01	J35	2782754.884	39647851.774	6.00	J54	2782859.643	39647889.653	1.81
J17	2782645.325	39647858.912	6.00	J36	2782760.812	39647852.701	6.00	J55	2782864.148	39647890.666	2.94
J18	2782651.053	39647857.118	6.00	J37	2782766.727	39647853.706	6.00	J56	2782869.259	39647893.240	41.77
J19	2782656.826	39647855.484	6.00	J38	2782772.630	39647854.789	6.00	J57	2782874.896	39647914.989	20.28
J20	2782662.645	39647854.010	6.00	J39	2782778.521	39647855.948	6.00	J58	2782880.363	39647933.418	16.70
J59	2782884.3261	39647948.128	19.38	J60	2782890.148	39647966.245	4.60	J61	2782895.2394	39647970.263	42.94
J62	2782892.547	39647955.034	6.73	J63	2782895.191	39647961.226	74.87	J64	2782899.3600	39648084.794	50.27
J65	2782899.3600	39648084.794	50.27	J66	2782899.3600	39648084.794	50.27	J67	2782899.3600	39648084.794	50.27
J68	2782899.3600	39648084.794	50.27	J69	2782899.3600	39648084.794	50.27	J70	2782899.3600	39648084.794	50.27
J71	2782899.3600	39648084.794	50.27	J72	2782899.3600	39648084.794	50.27	J73	2782899.3600	39648084.794	50.27
J74	2782899.3600	39648084.794	50.27	J75	2782899.3600	39648084.794	50.27	J76	2782899.3600	39648084.794	50.27
J77	2782899.3600	39648084.794	50.27	J78	2782899.3600	39648084.794	50.27	J79	2782899.3600	39648084.794	50.27
J80	2782899.3600	39648084.794	50.27	J81	2782899.3600	39648084.794	50.27	J82	2782899.3600	39648084.794	50.27
J83	2782899.3600	39648084.794	50.27	J84	2782899.3600	39648084.794	50.27	J85	2782899.3600	39648084.794	50.27
J86	2782899.3600	39648084.794	50.27	J87	2782899.3600	39648084.794	50.27	J88	2782899.3600	39648084.794	50.27
J89	2782899.3600	39648084.794	50.27	J90	2782899.3600	39648084.794	50.27	J91	2782899.3600	39648084.794	50.27
J92	2782899.3600	39648084.794	50.27	J93	2782899.3600	39648084.794	50.27	J94	2782899.3600	39648084.794	50.27
J95	2782899.3600	39648084.794	50.27	J96	2782899.3600	39648084.794	50.27	J97	2782899.3600	39648084.794	50.27
J98	2782899.3600	39648084.794	50.27	J99	2782899.3600	39648084.794	50.27	J100	2782899.3600	39648084.794	50.27

S=15330平方米 合142.995亩



批次地块: 2019-26-1  
 地块面积: 9.5330公顷 合142.995亩  
 现状地类: 水田、旱地、园地、其他农用地、建设用地、未利用地  
 权属单位: 罗东镇罗溪村

2019年5月数字化制图。  
 2000国家大地坐标系: 中央子午线117度。  
 1985国家高程基准, 等高距为1米。  
 2007年版图式。

厦门闽矿测绘院  
 测绘资质: 甲级 (2)  
 证书编号: 甲测资字3500148  
 发证机关: 国家测绘地理信息局

测量员: 傅新荣  
 绘图员: 李益红  
 检查员: 詹钟瑜

厦门闽矿测绘院

39647.777

39648.327